

2018 - 2019 Woodside School Map

70
Community Gym

Middle School:

- 23 - Bowdoin
- 24 - Parker
- 25 - Iverson
- 26 - Wickstrom
- 27 - Liu
- 28 - Fair
- 29 - Schneider
- 30 - Borges
- 31 - Mull
- 32 - Valentine
- 33 - G. Waters
- 34 - McManis
- 35 - M.S Copy Rm
- 36 - D'Ambrosio
- 37 - Hoss
- 70 - Haddon & Jones

Support Services

- 38 - Nelson
- 38B - Brunner
- 38E - Drysdale
- 38F - Fritts
- 39 - Wildcats Rm
- 39A - Hansen
- 39B - Mitchell
- 39C - Woodside School Foundation
- 40 - School Office
- 50 - Library
- 60 - Sellman Auditorium
- 70 - Community Gym

2nd Grade:

- 9 - Griffith
- 10 - Pierce
- 11 - Faleschini

3rd Grade:

- 12 - McLaughlin
- 13 - Bertine
- 15 - Simkins

4th Grade:

- 14 - Kim
- 16 - Baumgartner
- 17 - Koutoumanis

5th Grade:

- 20 - Card
- 21 - Edelman
- 22 - Parkhurst

Other:

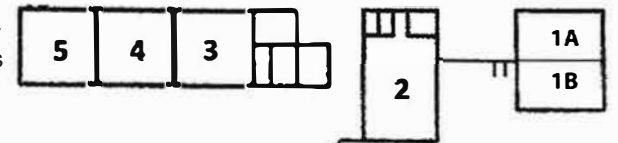
- 18 - Computer Lab
- 19 - Design Lab

Kindergarten:

- 3 - Reilly
- 4 - Hessami
- 5 - McNamara

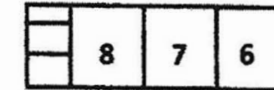
Preschool:

- 1A - Limbert
- 1B - Dayeh



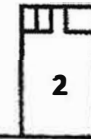
1st Grade:

- 6 - Lighty
- 7 - McAdams
- 8 - Workshop Edu

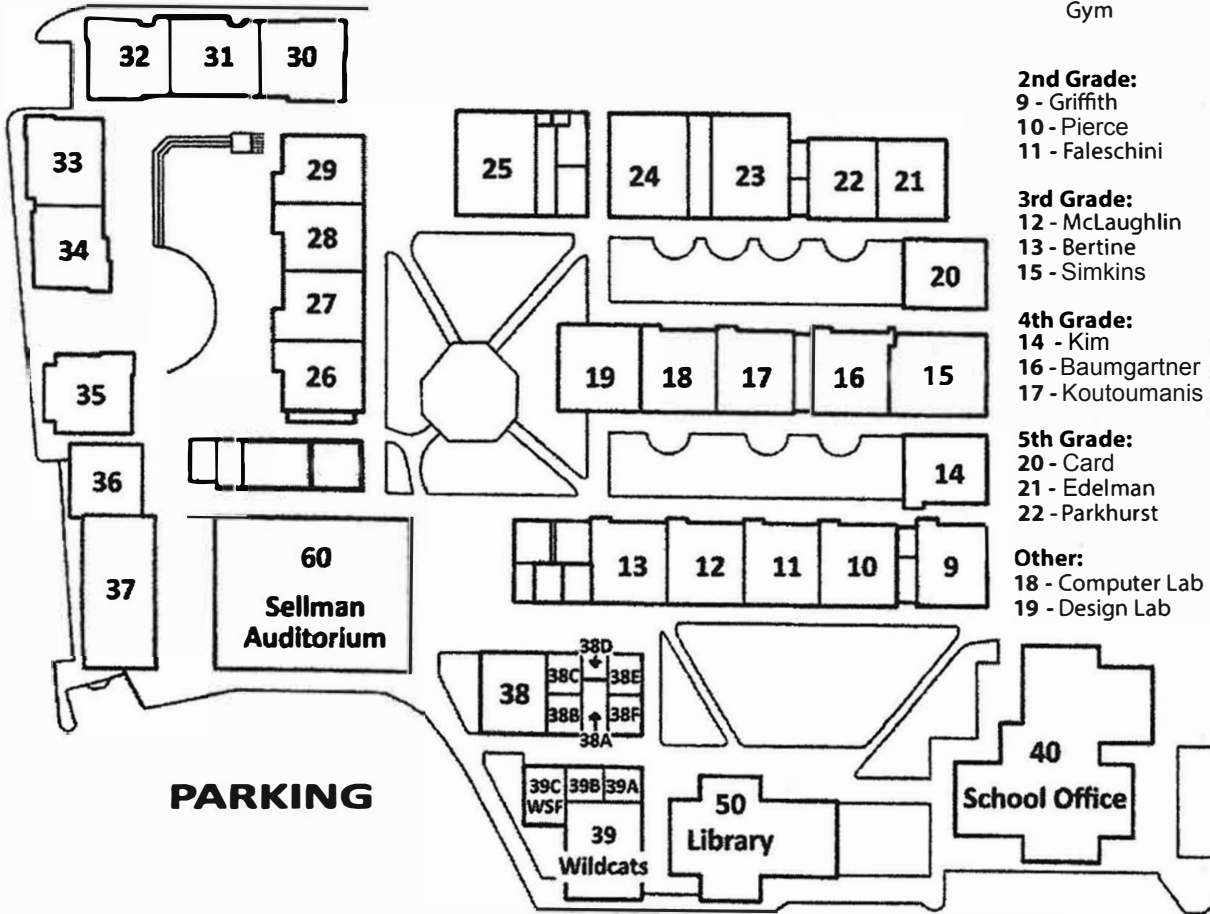
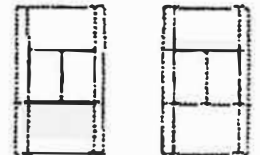


Transitional Kindergarten:

- 2 - Virgallito



Tennis Courts



PARKING

PARKING

WOODSIDE ROAD