



— Meet the Upper School 2022-2023

Introduction



Agenda

Upper School Tour (2:00-2:30pm)

5th-8th Grade Program Overview (2:45-3:30pm)

Q&A/Meet and Greet Time

Woodside Upper School Highlights



- TK-8 school w/ private preschool on campus
- Unique offerings: Design program, garden, SEL/advisory, Mandarin and Spanish, Music, Physical Fitness, Art, elective program, small class sizes
- Strong high school acceptance rates, year after year
- Follow us on Instagram @woodside_school_district



Best Public Middle School
Teachers in California

#1 of 2,536



Best Public Middle Schools
in California

#9 of 2,701



Best Public Middle Schools
in San Francisco Bay Area

#3 of 368



Best Public Middle Schools
in San Mateo County

#1 of 46

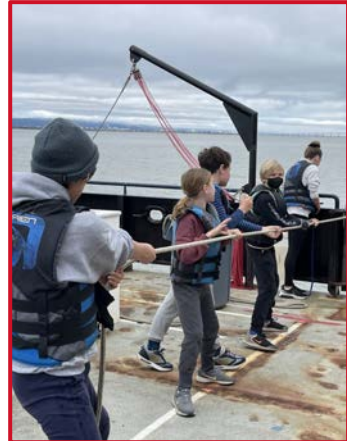
2023 Niche Rankings

5th Grade



5th grade is a year of transition and growth!

- ★ Independence
- ★ Responsibility/Accountability
- ★ Organization/Prioritizing
- ★ Pace/Effort
- ★ Self-Advocacy
- ★ Study Skills/Preparation
- ★ Encouragement/Positivity



English Language Arts

Curriculum Emphasis

- Emphasis on Literary Analysis with novel based study
- Choose high-interest, relevant novels from a diverse selection of authors (SEL focus)
- Balance of fiction and nonfiction in both reading & writing
- Integration of Teacher College mini-lessons at every grade level
- Focus on narrative, literary essay, research based writing, and argument writing
 - Multiple on-demand writing opportunities
- Provide frequent opportunities for honing presentation and language skills
- Wordly Wise vocabulary program at all grade levels
- Holt Grammar Program at all grade levels

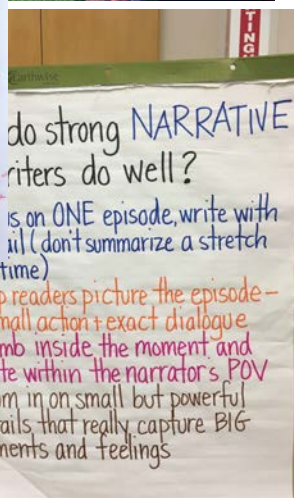
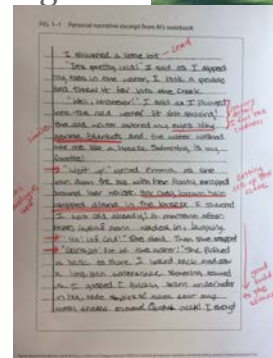
Program Highlights

- Double periods of ELA daily
- Equip writers with strategies to think and write independently
 - Socratic seminars, writing celebrations, public speaking opportunities
- 8th Grade transition to High School
 - Interview and essay workshops

Alicia McLaughlin- amclaughlin@woodsideschool.us

Amy Borges - aborges@woodsideschool.us

Kristina Valentine - kvalentine@woodsideschool.us



Social Studies



- CA History/Social Science Framework standards (2016)
- Teachers' Curriculum Institute, Stanford History Education Group (SHEG), American Yawp (8th-only)
- Current events, source analysis, Socratic seminars, mock trial, debates, and simulations
- Develop spatial and chronological thinking, group and independent research techniques, and historical interpretation skills

- 8th-Grade Washington, D.C. Field Trip

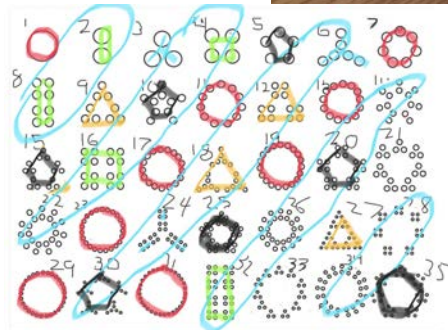


- Amy Borges - aborges@woodsideschool.us
- Alicia McLaughlin - amclaughlin@woodsideschool.us
- Jonathan Schneider - jschneider@woodsideschool.us



Math

- Big Ideas Common Core Curriculum
- SVMI Members
- Small Class Sizes – 6 to 16 students per class
- Flexible Ability Groups; backed up to PE/Music to avoid tracking
- Opportunities for Acceleration
- Math Pathways
- Chelsea Card – ccard@woodsideschool.us
- Nikkie McManis – nmcmanis@woodsideschool.us



Science

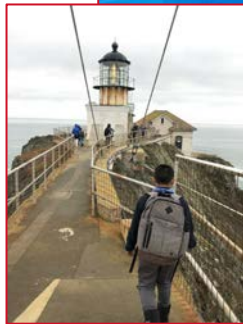
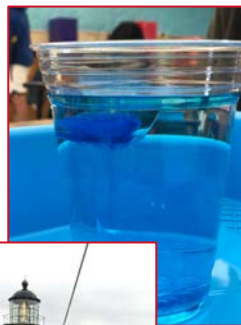


Integrated Model for 5th-8th Grade: Physical, Life, and Earth Science

- ★ Program adoption: NGSS Aligned **Stemscopes**
 - 5E Model; Engage, Explore, Explain, Elaborate, Evaluate
 - Hands-on investigations and demonstrations
 - Abundant lab resources and small class size
 - Engaging experiments and simulations
 - Interactive Notebooks
 - Science Current Event Presentations
 - Differentiated online component
 - Varied & engaging supplemental lesson & activities
 - Engineering and Design Challenges
 - Cooperative Lab Groups and collaboration

- ★ Vast Enrichment Opportunities
 - County STEM Fair
 - 6th Grade Science field trip to Marin Headlands
 - 7th Grade Science field trip to Olympic National Park

- Jennifer Parker - jparker@woodsideschool.us
- Jonathan Schneider - jschneider@woodsideschool.us
- Chelsea Card - ccard@woodsideschool.us



Music

6th Grade Music

- 6th grade students have music two times per week
- A continuation of the 5th grade music program
- In addition to music class, many 6th grade students choose to be part of the Middle School (6th-8th) Elective Band

Music Electives

- 7th Grade guitar & 8th Grade Percussion
 - Philosophy of these options
 - Performance opportunities and class activities
- Middle School Elective Band
- Ukulele and Guitar Electives
- Zero Period Jazz Band
 - Advanced performing group
 - Many performance opportunities
 - must be in Elective Band to participate

Beth Dameron - bdameron@woodsideschool.us



Spanish

- Proficiency-oriented language instruction - Students work on speaking, listening, reading and writing skills daily in order to communicate in the most effective manner possible
- Language taught through student centered activities, that practice presentational, interpersonal, and interpretive skills
- Content features authentic Central and South American materials such as songs, legends, articles, videos, & artwork to include culture and language from a variety of sources
- Lots and lots of games to keep students engaged as they learn
- By graduation students prepared to enter Spanish 2 or 3 in High School

Annie Brown- abrown@woodsideschool.us



Mandarin



- Balanced curriculum: development of four skills in Mandarin — listening, speaking, reading, and writing, as well as cultural understanding.
- Student-centered learning environments
 - Learning activities that match students' proficiency level in Mandarin.
 - Use authentic materials: songs, video clips, news and etc.
 - Use technology and educational applications: Kahoot, book creator, Edpuzzle, Google classroom, etc.
 - Apply teaching methods that invite students taking the lead in learning and promote passive learning.
 - Prepare students for their high school study.

Hui Liu - hliu@woodsideschool.us





Physical Education

Mission: To provide students with the skills, knowledge, and attitude needed to lead physically active lifestyles lives both today and in the future

- CA Physical Education Framework Standards (2007)
- Students have a wide variety of activities including dance, tumbling, cooperative, and competitive games.
- PE class alternates with music every other day.
- SEL – A safe and positive learning environment. Students learn to build relationships by working together both cooperatively and competitive activities.
- Physical fitness is emphasized and measured using FITNESSGRAM (a state-adopted physical education program that helps students focus on personal improvement). Students learn to set goals and monitor progress.
- Middle school students have additional opportunities for physical activity classes such as courses in Physical Fitness or electives such as Self Defense, Yoga, Wrestling, and Strength and Conditioning.

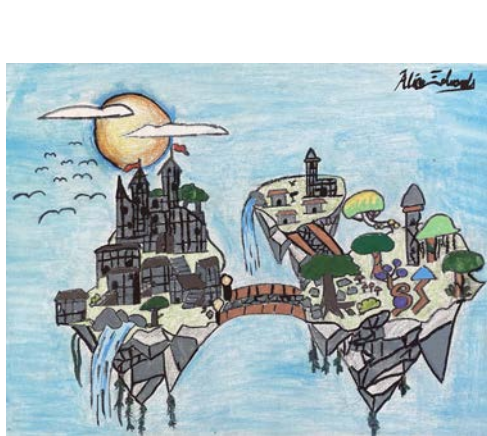
Visual Arts



- Art lessons in Middle School follow the Social Studies curriculum in 6th and 7th grade. 8th grade is a mixture of culminating projects and is also connected to curriculum
 - **6TH GRADE:** Cave Art, Ancient Egypt, Mandalas from India ...
 - **7TH GRADE:** Medieval Art, Islamic pattern study, West African masks ...
 - **8TH GRADE:** Self-portraits inspired by Frida Kahlo, tessellations through Geometry, and design thinking project on Social Consciousness Art ...

ART ELECTIVE - an independent study opportunity allowing middle school students to grow their creativity by exploring with the materials & resources in the art room throughout the trimester

Amy Harmon - aharmon@woodsideschool.us





The Learning Center

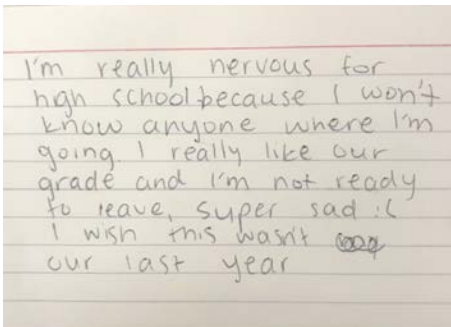
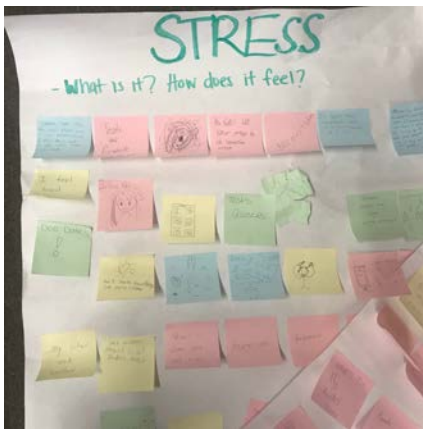
- The Learning Center provides students with specialized academic instruction specific to their IEP goals in combination with providing students support in their Core academic classes.
- Students in the Learning Center engage in Executive Functioning lessons that build each year. Topics include: Goal Setting, Thinking Flexibly, Organizing & Prioritizing, Self Monitoring.
- Services are provided in a Full Inclusion Model with Push-In Support & Collaboration with general education teachers
- Christine Jones: cjones@woodsideschool.us
- Laura Carlone: lcarlone@woodsideschool.us
- Paraprofessionals: Yani Piedra, Amber Alvarez

Advisory Program



Course Highlights

- Open Session
- Student need driven course/topics
- Social Emotional Skill Building
 - Stress Management
 - Communication
 - Self-Advocacy
 - Conflict Management
 - Active Listening
- Creating trusting Environment with classmates (i.e. Team Building Activities)
- Focused activities based on monthly themes



Beth Dameron - bdameron@woodsideschool.us
Mena Lam - mlam@woodsideschool.us

Community Service



- Service-learning model to enrich and deepen students' experiential education
- Middle School students complete 30 hours by graduation
 - Woodside School
 - Community Service elective
 - Peer Leader Program
 - Reader Leader
 - Assistant Coaching
 - Rise Against Hunger
- Middle School students are encouraged to develop their own special interests in community service
- Sharon LaCrosse – slacrosse@woodsideschool.us



Design Thinking



Mission Statement: Students will use design practices to develop their abilities in understanding others, analyzing challenges, and reflecting on their own work.

Course Highlights:

- 8th Grade Design Exit Project: take on year-long project that incorporate multiple disciplines.
- Engage with the community.
- 6th and 7th Grade: Immersed in Engineering/Design process in academic classes, as well as the option to attend Design electives
- 8th-grade projects are student-driven based on their interests and passions
- Students may use the following technologies in their projects: Fusion 360, Arduino/Raspberry Pi, HTML/CSS, Adobe Creative Suite, SketchUp, iMovie, Final Cut Pro, and InVision.

Electives



8th Period Elective/Enrichment Classes:

- Art Elective
- Band
- Design Thinking
- Lego Robotics
- Web Design
- Yearbook
- Body Science
- Community Service
- Science of Food / Adv. Science of Food
- Games of Strategy
- Modern Readers
- Mystery Elective
- Photography
- Self Defense Training
- Strength and Conditioning

- Study Hall
- Spanish Club
- Public Speaking
- Operetta (mandatory for all 8th grade students during 3rd trimester)

Zero Period/Lunch Time Offerings:

- Student Council
- Music - Chamber Singers
- Music - Showstoppers
- Music - Jazz Band (Must Be in Band Elective to Participate)



Upper School Traditions & Experiences

6th	7th	8th		
<ul style="list-style-type: none">- Marin	<ul style="list-style-type: none">- Yosemite/ Olympic National Park	<ul style="list-style-type: none">- Operetta- Cast party- May Day float- 8th Grade Exit Project- Washington, D.C.- Graduation week		
<table><tr><td><ul style="list-style-type: none">- Upper School BBQs- Dances- Talent Show- Homecoming</td><td><ul style="list-style-type: none">- Peer leaders- Cotillion- Sports programs- Spirit Week</td></tr></table>			<ul style="list-style-type: none">- Upper School BBQs- Dances- Talent Show- Homecoming	<ul style="list-style-type: none">- Peer leaders- Cotillion- Sports programs- Spirit Week
<ul style="list-style-type: none">- Upper School BBQs- Dances- Talent Show- Homecoming	<ul style="list-style-type: none">- Peer leaders- Cotillion- Sports programs- Spirit Week			

Field Trips



High School Acceptance Rates & Support

School	Acceptance Rate 21-22	Acceptance Rate 20-21	Acceptance Rate 19-20	Acceptance Rate 18-19
St. Francis	83.33%	100%	86%	56%
Sacred Heart	44%	83%	80%	50%
Woodside Priory	71.43%	83%	29%	13%
Menlo	33.33%	62%	50%	46%
Crystal Springs	25%	18%	100%	25%
Nueva	N/A	33%	N/A	29%
Urban School SF	66.67%	N/A	N/A	N/A
Castilleja	N/A	50%	50%	100%
Lick WilmerdingHS	N/A	100%	0%	100%
Notre Dame	100%	N/A	N/A	100%
Serra	100%	100%	100%	100%
The Bay School	50%	N/A	N/A	N/A
Waldorf SF	50%	N/A	N/A	N/A
AHF	N/A	N/A	50%	46%
Bellarmino	100%	100%	50%	100%
Drew	100%	N/A	N/A	N/A
Eastside Prep	100%	50	50%	80%
INT. School Peninsula	N/A	N/A	N/A	N/A
Mercy	N/A	100%	N/A	N/A
Mid Pen	N/A	100%	N/A	100%
Mitty	100%	N/A	N/A	100%
Pinewood	100%	60%	100%	100%



Thank you for
attending today!